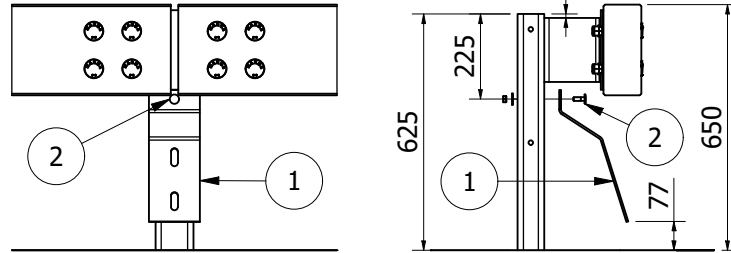
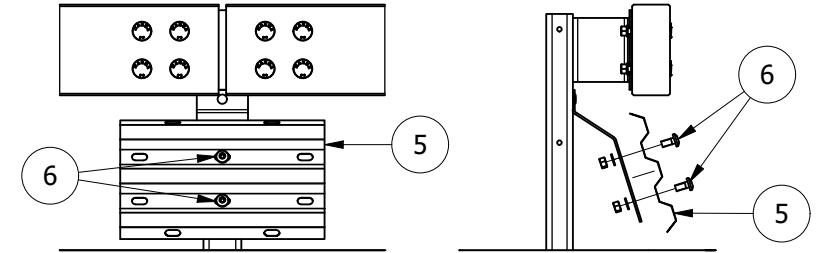


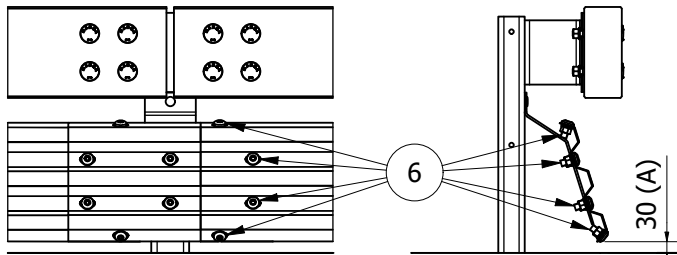
Post cover removal



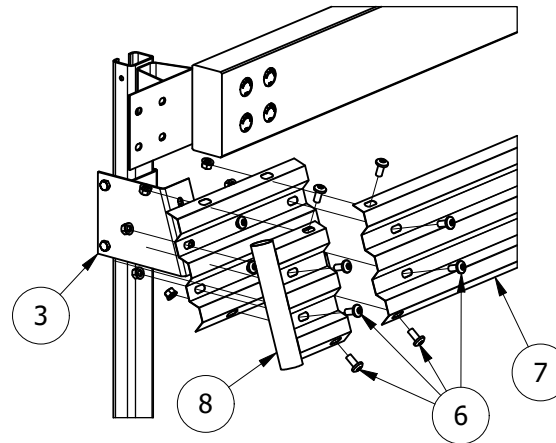
Step "A" - Bracket installation



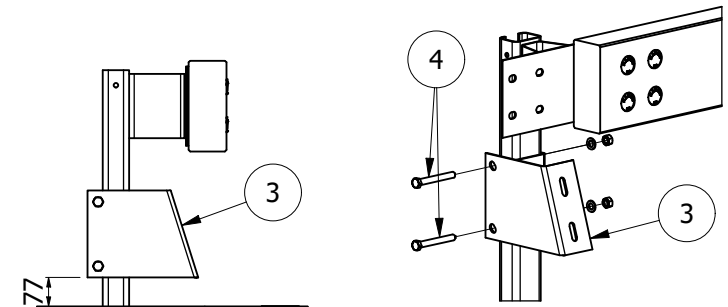
Step "B" - Splice plate installation



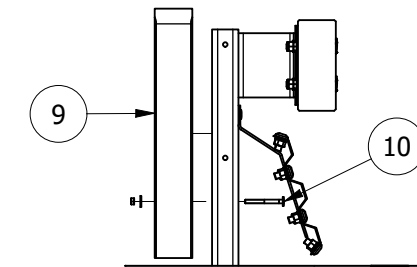
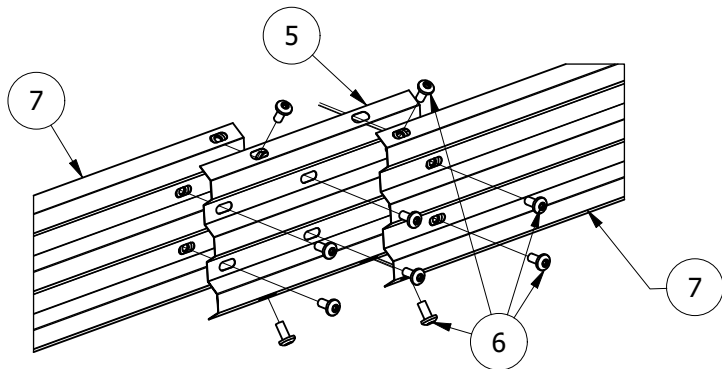
Step "C" - Protection rail installation



Step "D" - Terminal installation



Terminal bracket installation



Post cover assembly

Measurements expressed in mm

**Relevant measure:** A= ground clearance of the lower edge of the MPS

**Tightening torque:** TT/TE M10x30 class 8.8 - Minimum torque 50 Nm  
 TT M16x35 class 8.8 - Minimum torque 50 Nm  
 TT M16x130 class 8.8 - Minimum torque 50 Nm

### Component list

Ref.	Item
1	Bracket
2	Bolts TTQST M10x30 class 8.8
3	End Bracket
4	Bolts TE M16x130 class 8.8
5	Corrugated Splice Plate
6	Bolts TT M16x35 class 8.8
7	Protection rail L= 2840 mm
8	Terminal
9	Single rear post cover
10	Bolts TTQST M10x100



**MARGARITELLI**  
**ROAD SAFETY**

Drawing IM 005-01 RP	Issued 04/07/2022
Review 00	Date --/--/----

**Object:** Road Side Safety Barrier N2BL-01  
 Certificate of Costancy of Performance CE n° 0497/CPR/3151  
 with continuous motorcyclist protection system RiderPro-MRS-03  
 Assembly instructions