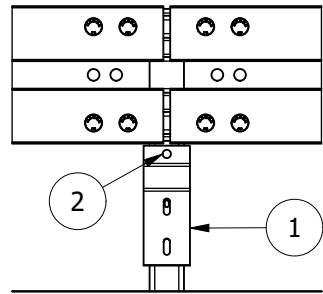
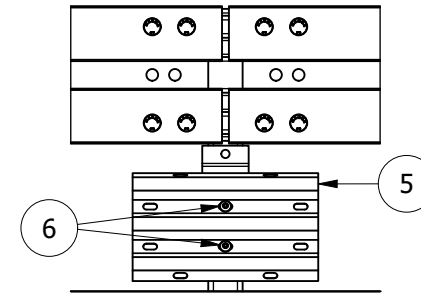
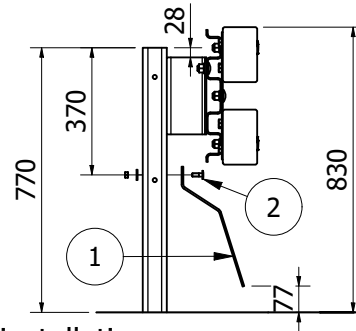


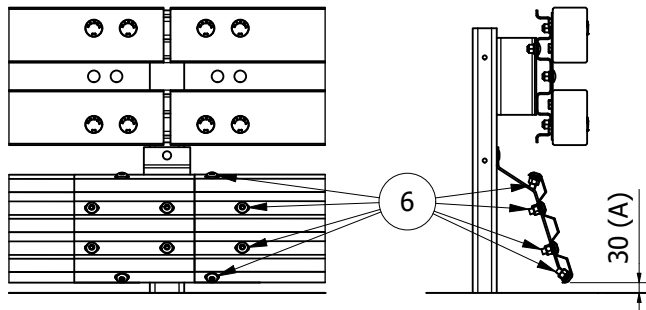
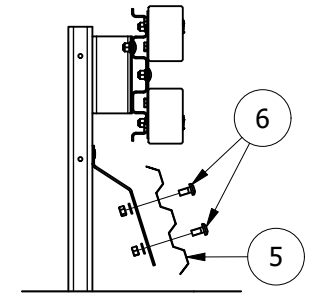
Post cover removal



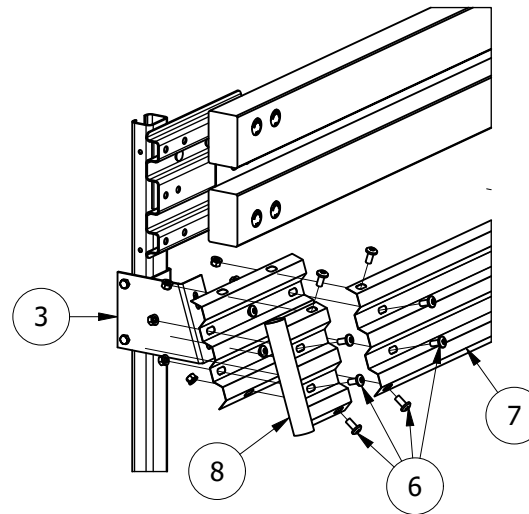
Step "A" - Bracket installation



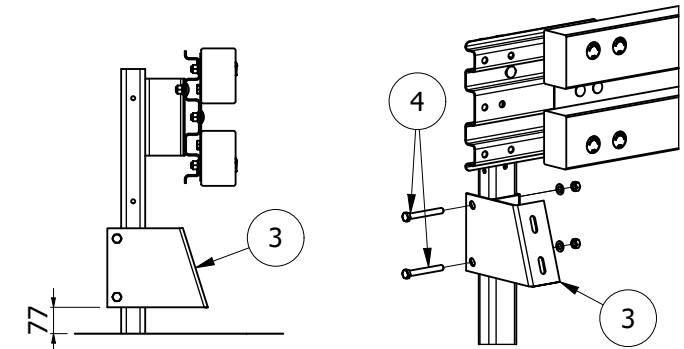
Step "B" - Splice plate installation



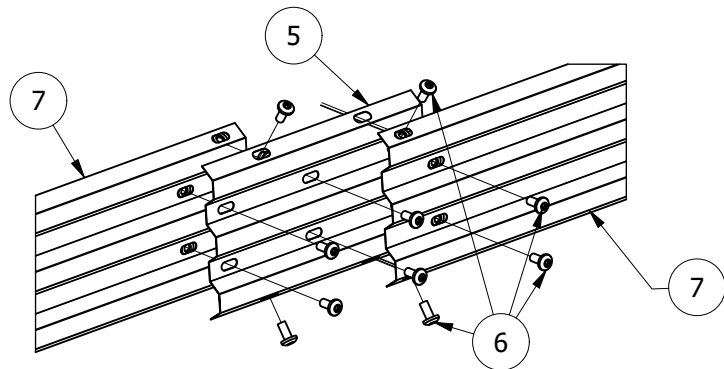
Step "C" - Protection rail installation



Step "D" - Terminal installation



Terminal bracket installation

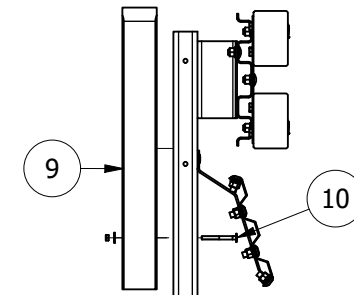


Measurements expressed in mm

Relevant measure: A= ground clearance of the lower edge of the MPS

Tightening torque: TT/TE M10x30 class 8.8 - Minimum torque 50 Nm
 TT M16x35 class 8.8 - Minimum torque 50 Nm
 TT M16x130 class 8.8 - Minimum torque 50 Nm

Component list	
Ref.	Item
1	Bracket
2	Bolts TTQST M10x30 class 8.8
3	End Bracket
4	Bolts TE M16x130 class 8.8
5	Corrugated Splice Plate
6	Bolts TT M16x35 class 8.8
7	Protection rail L= 2840 mm
8	Terminal
9	Single rear post cover
10	Bolts TTQST M10x100



Post cover assembly



MARGARITELLI
ROAD SAFETY

Drawing IM 023-01 RP	Issued 20/02/2023
Review 00	Date --/--/----

Object: Road Side Safety Barrier H1BL-01
 Certificate of Costancy of Performance CE n° 0497/CPR/3152
 with continuous motorcyclist protection system RiderPro-MRS-03
 Assembly instructions